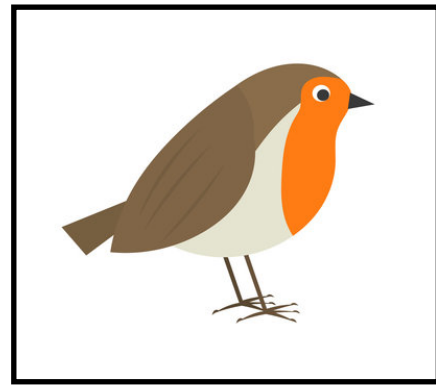
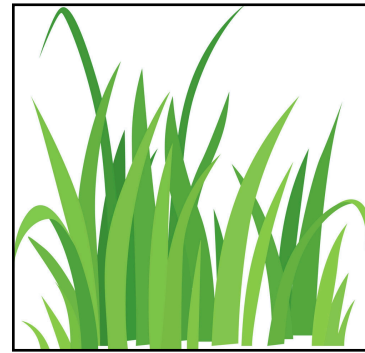


SCAVENGER HUNT

Tick the boxes when you see or find something



2 types of bird



3 different green things



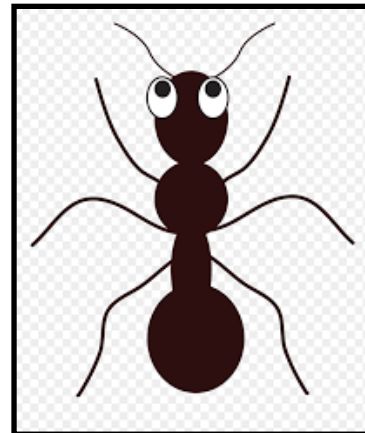
2 different flowers



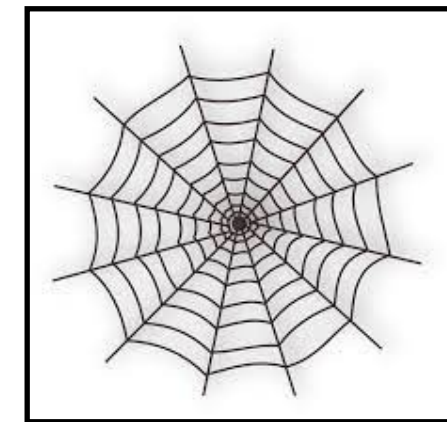
An animal



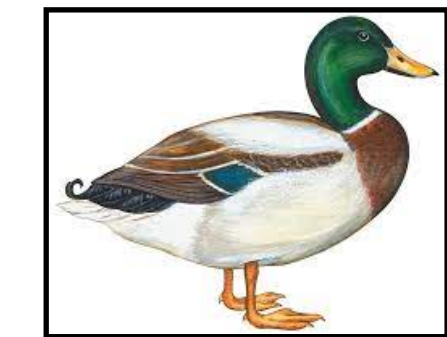
Something rough to touch



An insect



A spider's web



A duck



Clover



A metal sculpture



A cloud





SCAVENGER HUNT

HINTS AND TIPS

1. Have fun!
2. The metal sculptures are in the woodland area by the wetland ponds on the central path through the park.

You should be able to see a mushroom, a newt, a dragon fly and otter by the ponds (watch out for the mud!). There is a butterfly and an iris on the path leading up to the canal.
3. You can see lots of birds in the Brook Vale Nature Reserve that runs between the Beach Road entrance and the Brook Vale entrance (by the railway bridge).
4. Why not take some photographs of what you see and if your parents allow load them on to the Rimrose Valley Friends Facebook group.
5. You can make a note of what you have seen on the back of the sheet.

Brook Vale

Derwent Rd

Beach Rd

Bridge

Bridge

Sculpture Woods

Country Park

Valley

Rimrose

Litherland

Sefton Rd

FORD

Gorsey Ln

Cookson's
Bridge

